

Can you write the names of these villages in the right place on the map?



*Ambly  
Bande  
Charneux  
Charvanne  
Ferrières*

*Grune  
Harsin  
Lesterny  
Masbourg  
Mormont*



Draw the other half of each leaf.

What on earth  
is an arboretum  
???

It's a place where you can  
learn tons of stuff about  
nature and trees, while  
having fun at the same time



Black locust



Beech



Hornbeam



Wild cherry



Birch



Oak



Wild cherry

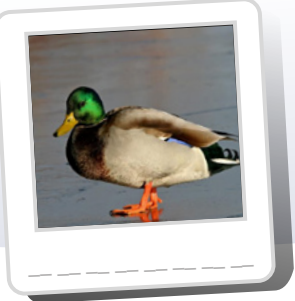


Arboretum

<http://arbrefor.businesscatalyst.com/>

Name each animal and match it to its track.

Boar – Deer – Duck – Blackbird



*Do you like nature and animals?*



**Priese observation tower**



**Bilaude observation platform**



**The Huttes observation platform**