

Can you write the names of these villages in the right place on the map?

Marche-en-Famenne



Aye
Champlon
Frimbiémont
Hargimont
Hollogne
Humain

Lignières
Marloie
On
Roy
Verdenne
Waha



Find the Walloon words
linked to Marche's
folklore in the grid.

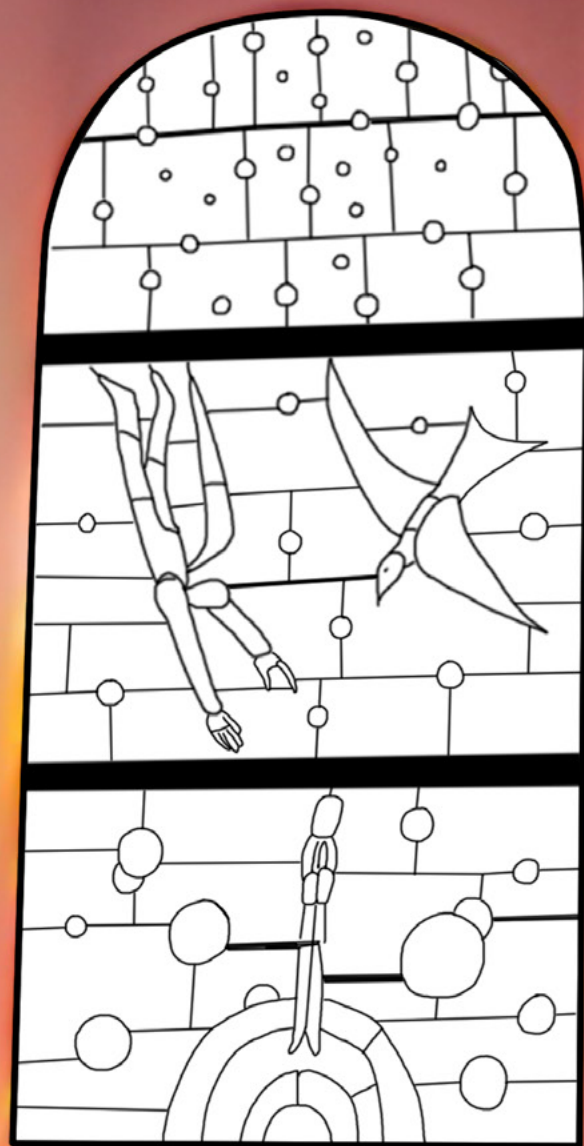
A	P	M	N	U	T	O	N	S
G	M	A	U	T	C	H	I	B
O	B	T	F	H	R	W	J	I
P	L	O	V	I	N	E	T	E
C	H	U	F	L	E	U	Z	S
M	E	F	C	F	E	S	I	S
D	I	E	T	L	H	E	Q	O
M	A	C	R	A	L	E	S	N
A	G	U	G	U	S	S	E	S

Gugusse
Nutons
Chufleu
Plovinète
Biessons
Matoufè
Macrâles
Mautchî



Tourist Information Office
www.famenneardenne.be

Colour the drawing, using the same colours as the original church window.



*The stunning
colours that
illuminate the life
of Saint Stephen...*

Who am I?

I am silently praying under a
centuries-old lime tree and my
name is made out of 2 words:

1. A colour
2. A religious man

I am the

_ H _ _ _ _ N _

The church contains a treasure designed by a famous Belgian artist. What is the name of the artist?

Clue: the artist also created a sculpture that is located nearby the
Place aux Foires in Marche-en-Famenne. Unscramble the letter jumble
to find his name : ENJA-IMHLEC NOFOL

What treasure am I protecting?

Well, you'll just have to go and see for yourself!

I watch over the village church
in a village nearby Marche.
My name is hidden in the grid
below. What is the name of
this neighbouring village?

M	B	I	J	M	E	V
I	L	E	E	O	T	I
C	A	G	A	I	I	T
H	N	O	N	N	E	R
E	C	U	R	E	N	A
L	W	A	H	A	N	I
F	O	L	O	N	E	L